



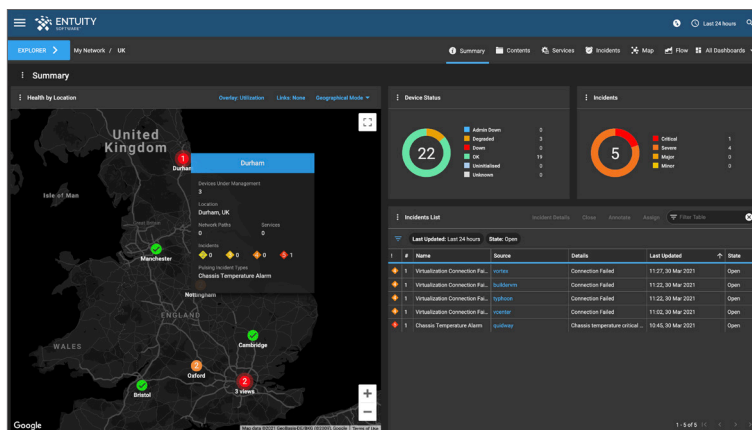
# Real-Time Insight to Your Servers Uptime.

## ENTUITY SERVER MONITORING DATA SHEET

Enhance your infrastructure monitoring efforts with Entuity's Server Monitoring capabilities. Entuity can discover your server infrastructure, providing a detailed list of assets that users can seamlessly decide which to take under monitoring management. Entuity monitors all the components of your server hardware, as well as your OS and Virtual Machine instances.

### Hardware Device Status:

Monitor the overall health of your hardware at a glance with the ability to drill down into the individual component status of your servers. Discover and monitor your batteries, CPUs, enclosures, fans, IO Modules, logical and physical disks, memory, ports, power supplies, and more.



### SUPPORTED DEVICES:

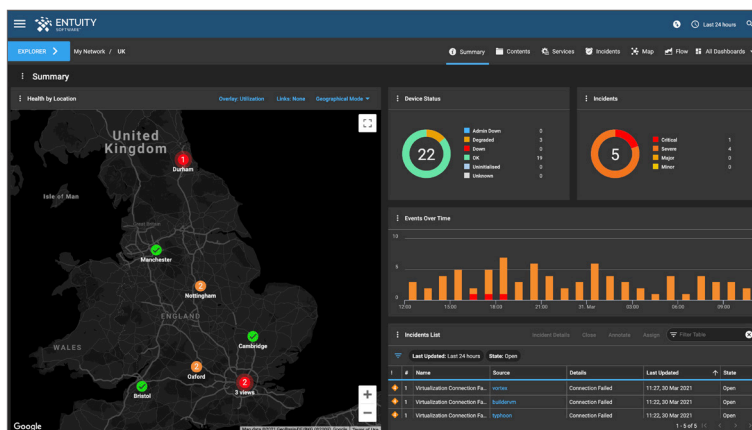
Dell PowerEdge • HP ProLiant • Cisco UCS

### MONITORED COMPONENTS:

- Batteries
- CPUs
- Enclosures
- Fans
- IO Modules
- Logic Disks
- Memories
- Physical Disks
- Ports
- Power Supplies
- Sensors
- Other

### OS Monitoring:

Move your monitoring visibility beyond server hardware to enable status monitoring, performance monitoring, and capacity planning with OS monitoring in Entuity. Whether your servers are running Windows, Linux, or VMware, you'll get the metrics that are important to you in easily customisable dashboards.



### SUPPORTED OS:

Windows • Linux • VMware

### MONITORED COMPONENTS:

- CPU Usage
- Memory Usage
- Description
- Location
- Name
- Model
- Manufacturer
- Version
- Ports
- Pagefile Usage %
- Blue Screen Action Configuration - e.g. hang on bluescreen/restart
- Disk Free (MB)
- Memory Used, Ballooned, Active, Pages (no. of hard page faults), page output (no. of pages written to disk)
- Traffic Rate
- Traffic Discards
- Traffic Errors

# Entuity Includes Everything You Need to Manage Your Digital Environment:



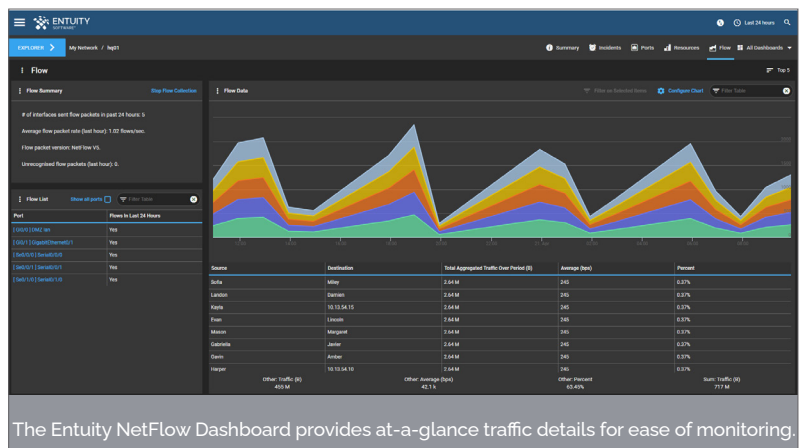
- Auto Discovery and Asset Management
- Dynamic Event Management System
- Network Performance Monitoring & Management
- Server Performance Monitoring
- Storage Performance Monitoring
- Configuration Management and Monitoring
- Network Flow Monitoring
- SurePath Application Path Monitoring
- Enhanced User Defined Polling
- Live Topology and Geographic Maps
- Root Cause Analysis
- Multi-Cloud Support — AWS, Azure
- Third Party Vendor Integrations
- Seamless and Infinite Scalability

## Uncommon Versatility — Integration with Industry Leaders Adds More Value

Entuity can easily be integrated with industry leaders such as BMC Software, VMware, Dell, ServiceNow, Splunk and Moogsoft delivering a uniform way to share network infrastructure data with application monitoring for a far-reaching management platform.

## Entuity Built-In Modules Supply Specialised Functionality

Entuity contains modules for specific management capabilities: SurePath Application Monitoring, IBM BladeCenters, QoS, MPLS, Firewalls, Cisco Unified Communications Manager, Cisco IPSLA, Wireless, Cisco ACI, High Availability, Routing Protocols and VPN Gateways.



## Network Management for Today and Tomorrow

Representing a solid alternative to multiple disparate network tools and expensive platform solutions, Entuity is known for its short training time and ease of management and administration. It adapts to how you wish to manage your environment and is up and running within hours. Visit [ParkPlaceTechnologies.com/entuity](http://ParkPlaceTechnologies.com/entuity) to learn more.



Park Place Technologies is your global data center and networking optimisation firm. Powered by the world's largest on-the-ground engineering team, a robust group of advanced engineers and our Enterprise Operations Center we leverage a global parts supply chain, automation, machine learning and a comprehensive portfolio of services and products to optimise networking and data center Uptime and performance.

Park Place's industry-leading and award-winning services include Park Place Hardware Maintenance™, Park Place Professional Services™, ParkView Managed Services™, Entuity Software™ and Curvature Hardware sales.

©2022 Park Place Technologies, LLC

